

TRI-ACE[®]

High Performance Radials

Sky is high Road is wide

forward with courage

TRI-ACE[®]
STREAK - I



TRI-ACE

Engineered in Japan
Spirally-wrapped jointless cap ply
Perfect balance between comfort and movement



TRI-ACE[®]

Certified by

GCC

CNCA 9000140

ECE E13 E-4409

INMETRO 078

NHTSA / DOT DOT
ECONOMY

SPORT



NEW

STREAK-II



HIGH PERFORMANCE
STREAK-I



NEW

Snow

SNOWER

NEW



STABILITY
STEADY-99

COMFORT
A22 BEGKO



SILENCE
A 26



FUEL ECONOMY
A28



HEAVY LOAD
B22 COMMERCIAL VEHICLE TIRE



4X4 OFF-ROAD
PIONEER AT1
Radial Tires for 4WD and RV



LOW NOISE
B23 CITY TRANSIT



DURABILITY
B26



DURABILITY
PIONEER AT2
LIGHT TRUCK TIRE

WEAR

OFF-ROAD



TRI-ACE[®] Passenger car
Radial tire Production line





FORMULA-I

Engineered in Japan

High Performance Radials

Drive as you wish

Reveal outstanding performance

Overthrow conventional cap ply design and optimize **FORMULA-I**

- Jointless cap plies wrapped spirally at 0° angle extends to shoulder area
- Jointless cap plies, wrapped spirally at 0° angle and spaced variably, optimize contact area when counteracting effectively crown deformation caused by the action of centrifugal forces in high-speed driving, and so achieve more traction power and excellent driveability

Size	Tread Pattern	Ply Rating	L/I & S/S	Standard Rim	Load (kg)	Pressure (kPa)
245/35R20	FORMULA-I	XL	95 W/Y	8 1/2J	690	340
225/35R20	FORMULA-I	XL	93 W/Y	8J	660	340
255/35R20	FORMULA-I	XL	97 W	9J	730	340
275/45R20	FORMULA-I	XL	110 V	9J	1060	340
275/40R20	FORMULA-I	XL	106 V/W	9 1/2J	950	340
285/60R20	FORMULA-I	XL	116 V	9J	1250	340
275/55R20	FORMULA-I	XL	117 V	8 1/2J	1285	340
235/30R22	FORMULA-I	XL	90 W	8 1/2J	600	340
245/30R22	FORMULA-I	XL	92 W	9J	630	340
255/30R22	FORMULA-I	XL	95 W	9J	690	340
265/35R22	FORMULA-I	XL	102 V	9 1/2J	860	340
305/40R22	FORMULA-I	XL	114 V	11J	1080	340
305/45R22	FORMULA-I	XL	118 V	10J	1320	340
275/25R24	FORMULA-I	XL	96 W/Y	10J	710	340
255/30R24	FORMULA-I	XL	97 W/Y	9J	730	340
305/35R24	FORMULA-I	XL	112 V/W	11J	1120	340
275/30R24	FORMULA-I	XL	101 W	10J	825	340
275/25R26	FORMULA-I	XL	98 W	10J	760	340
295/30R26	FORMULA-I	XL	107 V	10 1/2J	975	340
305/30R26	FORMULA-I	XL	109 H/V	11J	1030	340



Enjoy your drive anywhere

Asymmetric **STREAK-II**

Shoulder blocks give accurate driveability during sharp cornering

Successive ribs in the central part of tires increase stability & sense of direction in straight moving

Combination of grooves and channels placed at variable angles in curved area, break through a water film effectively and get excellent grip.

Size	Tread Pattern	Ply Rating	L/I & S/S	Standard Rim	Load (kg)	Pressure (kPa)
215/55R17	STREAK-II FORMULA-I	STD	93 V/W	7J	660	300
225/55R17	STREAK-II FORMULA-I	STD	95 V/W	7J	690	300
235/55R17	STREAK-II FORMULA-I	STD	98 V/W	7 1/2J	760	300
205/40R17	STREAK-II FORMULA-I	XL	84 W	7 1/2J	500	340
215/40R17	STREAK-II FORMULA-I	XL	87 W	7 1/2J	545	340
215/45R17	STREAK-II FORMULA-I	XL	91 W	7J	615	340
225/45R17	STREAK-II FORMULA-I	XL	94 W	7 1/2J	670	340
235/45R17	STREAK-II FORMULA-I	STD	94 W	8J	670	300
235/45R17	STREAK-II FORMULA-I	XL	97 W	8J	730	340
245/45R17	STREAK-II FORMULA-I	STD	95 W	8J	690	300
215/35R18	STREAK-II FORMULA-I	XL	84 W	7 1/2J	500	340
225/40R18	STREAK-II FORMULA-I	XL	92 W	8J	630	340
235/40R18	STREAK-II FORMULA-I	STD	91 W	8 1/2J	615	300
235/40R18	STREAK-II FORMULA-I	XL	95 W	8 1/2J	690	340
245/40R18	STREAK-II FORMULA-I	XL	97 W	8 1/2J	730	340

STREAK-1

Treadwear 820
Traction A
Temperature A



All efforts just for your ultimate enjoyments

Treadwear 440
Traction A
Temperature A



STEADY-33

Spirally wrapped jointless cap ply
High speed evenness balance endurance

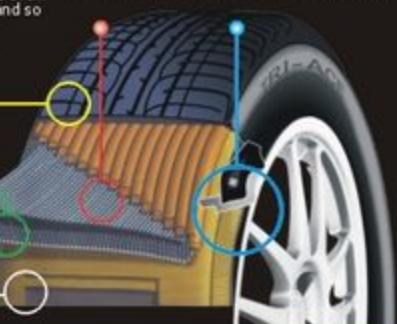
Two layers of **JOINTLESS NYLON CAP** generate continuous ring-shaped tension control, which makes more even stress, higher elasticity, and firmer structure, and so achieves longer endurance and better stability at high speed

Perfectly arc-shaped shoulder design avoids uneven tire wear and reduces noise in travel effectively

Two layers of pliable lightened steel belts effectively strengthen puncture-resistance, improve driveability and make high-speed driving more stable

Two layers of polyester cords provide better stability in horizontal direction, more even heat radiating, better shockproof performance of sidewall and improved overall performance

Concave design of bead improves high-speed drivability and sporting performance in travel
Reinforced bead gives good protection to high-grade wheels.



Size	Tread Pattern	Ply Rating	L/I & S/S	Standard Rim	Load (kg)	Pressure (kPa)
145/70R12	STEADY-33		69 Q	4.50B	325	250
165/70R13	STEADY-33		79 T	5.00B	437	250
175/70R13	STEADY-33		82 T	5J	475	250
175/70R14	STEADY-33		84 T	5J	500	250
185/70R14	STEADY-33		88 T	5J	560	250
195/70R14	STEADY-33		91 T	6J	615	250
205/70R14	STEADY-33	XL	98 T	6J	750	310
205/70R15	STEADY-33		96 Q	6J	710	250
215/70R15	STEADY-33		98 T	6 1/2J	750	250
165/65R13	STEADY-33		77 Q	5J	412	250
175/65R14	STEADY-33		82 H	5J	475	250
185/65R14	STEADY-33		86 H	5 1/2J	530	250
185/65R15	STEADY-33		88 H	5 1/2J	560	250
185/65R14	STEADY-33		86 H	5 1/2J	530	250
195/65R15	STEADY-33		91/95 V	6J	615	250
205/65R15	STEADY-33		94 H	6J	670	250
215/65R15	STEADY-33		96 H	6 1/2J	710	250
185/60R14	STEADY-33		82 H	5 1/2J	475	250
195/60R14	STEADY-33		86 H	6J	530	250
195/60R15	STEADY-33		88 H/V	6J	560	250
205/60R15	STEADY-33		91 H/V	6J	615	250
215/60R16	STEADY-33		91 H	6 1/2J	690	250
165/70R13LT	STEADY-33	6PR	88/96N	5.00B	560/530	350
195/70R15C	STEADY-33	8PR	104/102N	6J	900/850	450

Size	Tread Pattern	Ply Rating	L/I & S/S	Standard Rim	Load (kg)	Pressure (kPa)
205/65R15	STREAK-1		94 H	6J	670	250
225/60R16	STREAK-1		98 H	6 1/2J	750	250
195/55R15	STREAK-1	XL	89 V	6J	580	290
205/55R16	STREAK-1		91 V/W	6 1/2J	615	250
215/55ZR16	STREAK-1		97 W	7J	730	250
225/55ZR16	STREAK-1		91 W	7J	690	250
215/55ZR17	STREAK-1		93 W	7J	670	250
195/50R15	STREAK-1		82 W	6J	475	250
205/50R16	STREAK-1		87 W	6 1/2J	545	250
205/50R17	STREAK-1	XL	93 V/W	6 1/2J	650	340
215/50R17	STREAK-1	XL	95 V/W	7J	690	340
225/50R17	STREAK-1	XL	98 V/W	7J	750	340
215/45ZR17	STREAK-1	XL	87 W	7J	615	250

TRI-ACE®

Weed through the old to bring for the new
and advance with times



A 26

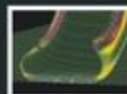
Size	Tread Pattern	L/I	S/S	Standard Rim	Load (kg)	Pressure (kPa)
185/70R13	A26	86	T	5J	530	250
185/70R14	A26	88	T	5J	560	250
195/70R14	A26	91	T	6J	615	250
205/70R14	A26	98/XL	T	6J	750	310
185/80R14	A26	91	T	5J	615	240

Consistent excellence because
of pursuing challenges



UPDATED FORMULA

Custom reinforcing ingredient (carbon black) is mixed with advanced silicone material. It improves adhesion and grip, and reduces rolling resistance, so achieving fuel economy accordingly.



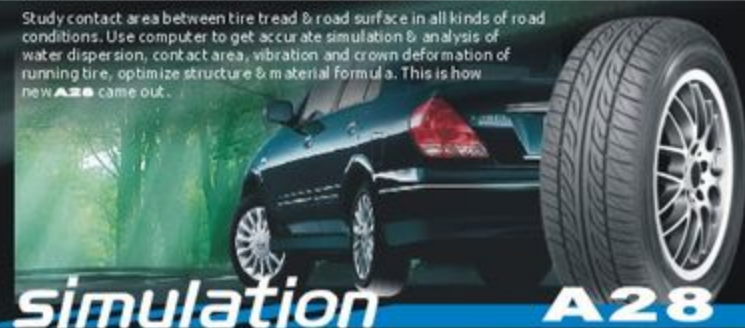
- Updated **new tread pattern** technology greatly improves wearing & braking performance of tire by optimizing pressure distribution in contact area
- High flex **POLYESTER** body cord generates tensile force so as to improve drivability and ride comfort
- Wide tread & **new tread pattern** design ensures steady & safe high-speed driving



A 22

Size	Tread Pattern	L/I	S/S	Standard Rim	Load (kg)	Pressure (kPa)
195/65R15	A22	91/95	V	6J	615	250
205/65R15	A22	94	H	6J	670	250
215/70R15	A22	98	T	6 1/2J	750	250

Study contact area between tire tread & road surface in all kinds of road conditions. Use computer to get accurate simulation & analysis of water dispersion, contact area, vibration and crown deformation of running tire, optimize structure & material formula. This is how new **A28** came out.



A 28

Size	Tread Pattern	L/I	S/S	Standard Rim	Load (kg)	Pressure (kPa)
185/60R14	A28	82	H	5 1/2J	475	250
195/60R14	A28	86	H	6J	530	250



155R12C	B22	8PR	88/86	N	4.50B	560/530	450
185R14C	B22	8PR	102/100	N	5 1/2J	850/800	450
185R14C	B23	8PR	102/100	N	5 1/2J	850/800	450
195R14C	B22	8PR	106/104	N	5 1/2J	950/915	450

*Drive out
Distant falcon hovering about
Accompanied with bonfire
And light of star
But nothing to fear
Just enjoy the journey and aim far*



TRI-ACE[®]

Engineered in Japan

Sky is high Road is wide forward with courage

Eminence originates from unceasing keen changes
Brand-new **PIONEER** continues the
practical style by displaying more reinforced

Size	Tread Pattern	Ply Rating	L/I	S/S	Standard Rim	Load (kg)	Pressure (kPa)
LT215/75R15	AT2	8PR	106/103	Q	6J	950/875	450
LT235/75R15	AT1	8PR	110/107	Q	6 1/2J	1060/975	450



LIGHT TRUCK TIRE
Radial Tires for 4WD and RV

Engineered in Japan

TRI-ACE[®]

Size	Ply Rating	L/I&S/S	Standard Rim	Pressure (KPa)	Load (Kg)
6.50R16LT	10PR	107/102Q	5.50F	560	975/860
7.00R16LT	10PR	111/107Q	5.50F	560	1100/965
7.00R16LT	12PR	115/110Q	5.50F	670	1220/1075
7.50R16LT	12PR	120/116Q	6.00G	670	1405/1240
7.50R16LT	14PR	122/118Q	6.00G	740	1495/1310



B26

B26 ENDURANCE SERIES

- Superior tread rubber improves heat resistance
- Exceptionally strong & durable bead ring design creates a high tear resistance
- Good wear/uneven wear resistance
- Ultra-steady driveability in wet road conditions
- Good highway endurance
- Low noise & excellent ride comfort
- Applicable for mini coach & non-overload van in long distance or city transit on paved roads

15%
tread life
Long UP



TRI-ACE Brand Snow Tires tech specification

Size	Pattern	Tread Depth	Load Index	Speed	Rim	Sw (mm)	Dia(mm)	Max.load (kg)	Infl (kPa)
195/65R15	SNOWER	11	91	T/H	6J	201	635	615	250
205/55R16	SNOWER	11	91	H	6J	209	647	670	250
195/60R15	SNOWER	11	88	T	6J	201	615	560	250
205/60R15	SNOWER	11	91	T/H	6J	209	627	615	250
175/65R14	SNOWER	11	82	T	5J	177	584	475	250
185/65R14	SNOWER	11	86	T	5 1/2J	189	596	530	250
185/65R15	SNOWER	11	88	T	5 1/2J	189	621	560	250
195/65R15	SNOWER	11	91	T	6J	201	635	615	250
205/65R15	SNOWER	11	94	H	6J	209	647	670	300
165/70R13	SNOWER	11	79	T	5.00B	170	562	437	250
175/70R13	SNOWER	11	82	T	5.00B	177	576	475	250
175/70R14	SNOWER	11	84	T	5J	177	601	500	300
185/70R14	SNOWER	11	88	T	5 1/2J	189	624	560	250
195/70R14	SNOWER	11	91	T	6J	197	636	615	250
195/50R15	SNOWER	11	82	H	6J	201	577	475	300
225/45R17	SNOWER	11	94	H/V	7 1/2J	225	634	670	340

TRI-ACE[®]
SNOWER



for snowplow use
Spirally wrapped jointless cap ply

Size	Pattern	Load Range	Tread width (mm)	Load Index	Speed	Std Rim	Section Width (mm)	Overall Diameter (mm)	Max. Load (kg)	Max. Pressure (kPa)
60 SERIES										
185/60R14	A28		10	91	T	5J	164	652	615	240
75 SERIES										
215/75R15	STEADY-33		11	100	S	6J	216	703	900	260
70 SERIES										
145/70R12	STEADY-33		10	69	Q	4.50B	160	509	325	250
155/70R13	STEADY-33		10	75	T	4.50B	167	548	387	250
165/70R13	STEADY-33		10	79	T	5.00B	170	582	475	250
175/70R13	STEADY-33		10	82	T	5J	177	576	475	250
185/70R13	A26		10	86	T	5J	186	598	530	250
175/70R14	STEADY-33		10	84	T	5J	177	602	500	250
185/70R14	A28		10	88	T	5J	186	624	560	250
185/70R14	STEADY-33		11	88	T	5J	186	624	560	250
195/70R14	A26		10	91	T	6J	201	630	615	250
195/70R14	STEADY-33		11	91	T	6J	201	630	615	250
205/70R14	A28		10	96/XL	T	6J	209	644	750	310
205/70R14	STEADY-33		10	96/XL	T	6J	209	644	750	310
205/70R15	STEADY-33		11	96	T	6J	209	669	710	250
215/70R15	A22		11	98	H	6.1/2J	221	683	750	250
215/70R15	STEADY-33		11	98	T	6.1/2J	221	683	750	250
65 SERIES										
165/65R13	STEADY-33		10	77	Q	5.00B	170	544	412	250
175/65R14	STEADY-33		10	82	H	5J	177	584	475	250
185/65R14	STEADY-33		10	86	H	5.1/2J	189	596	530	250
185/65R15	A22		10	88	H	5.1/2J	189	621	560	250
185/65R15	STEADY-33		10	88	H	5.1/2J	189	621	560	250
195/65R15	A22		10	91	H	6J	201	635	615	250
195/65R15	STEADY-33		10	95	V	6J	201	635	615	250
205/65R15	A22		10	94	H	6J	209	647	670	250
205/65R15	STEADY-33		10	94	V	6J	209	647	670	250
205/65R15	STEADY-33		10	94	V	6J	209	647	670	250
215/65R15	STEADY-33		10	96	H	6.1/2J	221	682	710	250
80 SERIES										
185/80R14	A28		10	82	H	5.1/2J	189	578	475	250
185/80R14	STEADY-33		10	82	H	5.1/2J	189	578	475	250
195/80R14	A28		10	86	H	6J	201	590	530	250
195/80R14	STEADY-33		10	86	H	6J	201	590	530	250
195/80R15	STEADY-33		10	88	H/V	6J	201	615	560	250
205/80R15	STEADY-33		10	91	V	6J	209	627	615	250
215/80R16	STEADY-33		10	95	H	6.1/2J	221	684	690	250
225/80R16	STEADY-33		10	98	H	6.1/2J	228	676	750	250
85 SERIES										
195/85R15	STEADY-33		10	89/XL	H/V	6J	201	595	580	250
205/85R16	STEADY-33		10	91	W	6.1/2J	214	632	615	250
215/85R16	STEADY-33		10	97	XL	7J	226	642	730	340
225/85R16	STEADY-33		10	95	W	7J	233	654	690	250
215/85R17	STEADY-33		10	93	W/W	7J	226	668	660	300
225/85R17	STEADY-33		10	95	W/W	7J	233	680	690	300
235/85R17	STEADY-33		10	98	W/W	7.1/2J	245	690	750	300
275/85R20	FORMULA-1		11	117	V	8.1/2J	279	810	1295	340
90 SERIES										
195/90R15	STEADY-33		10	82	W	6J	201	577	475	300
205/90R16	STEADY-33		10	87	W	6.1/2J	214	612	545	300

Size	Pattern	Load Range	Tread width (mm)	Load Index	Speed	Std Rim	Section Width (mm)	Overall Diameter (mm)	Max. Load (kg)	Max. Pressure (kPa)
205/50R17	STREAK-1		10	93	V/W	6.1/2J	214	638	650	340
215/50R17	STREAK-1		10	96	V	7J	226	648	690	340
84 SERIES										
225/60R17	STREAK-1		10	98	V/W	7J	233	658	700	340
285/50R20	FORMULA-1		11	116	V	9J	295	790	1250	340
44 SERIES										
215/45R17	STREAK-1		10	91	W	7J	213	626	615	340
225/45R17	STREAK-1		10	94	W	7.1/2J	225	634	670	340
235/45R17	STREAK-1		10	94	W	8J	236	644	670	300
235/45R17	STREAK-1		10	97	W	8J	236	644	730	340
245/45R17	STREAK-1		10	95	W	8J	243	652	690	300
275/45R20	FORMULA-1		11	110	V	9J	276	757	1060	340
305/45R22	FORMULA-1		11	118	V	10J	300	833	1320	340
40 SERIES										
205/40R17	STREAK-1		10	84	W	7.1/2J	212	596	500	340
215/40R17	STREAK-1		10	87	W	7.1/2J	218	604	545	340
225/40R18	STREAK-1		10	92	W	8J	230	637	630	340
235/40R18	STREAK-1		10	91	W	8.1/2J	241	645	615	300
235/40R18	STREAK-1		10	96	W	8.1/2J	241	645	690	340
245/40R18	STREAK-1		10	97	W	8.1/2J	243	653	730	340
275/40R20	FORMULA-1		11	106	V/W	9.1/2J	276	727	950	340
305/40R22	FORMULA-1		11	114	V	11J	313	803	1060	340
34 SERIES										
215/35R16	STREAK-1		10	84	W	7.1/2J	215	607	500	340
225/35R20	FORMULA-1		10	93	W/Y	8J	230	666	650	340
245/35R20	FORMULA-1		10	95	W/Y	8.1/2J	246	680	690	340
255/35R20	FORMULA-1		10	97	W	9J	260	686	730	340
285/35R22	FORMULA-1		11	102	V	9.1/2J	271	745	850	340
305/35R24	FORMULA-1		11	112	V/W	11J	305	828	1120	340
30 SERIES										
235/30R22	FORMULA-1		10	90	W	8.1/2J	241	701	600	340
245/30R22	FORMULA-1		10	92	W	9J	246	706	630	340
255/30R22	FORMULA-1		10	95	W	9J	260	713	690	340
255/30R24	FORMULA-1		11	97	W/Y	9J	264	762	730	340
275/30R24	FORMULA-1		11	101	W	10J	276	775	825	340
305/30R26	FORMULA-1		11	109	H/V	11J	305	846	1030	340
295/30R26	FORMULA-1		11	107	V	10.1/2J	301	838	975	340
24 SERIES										
275/25R24	FORMULA-1		11	98	W/Y	10J	278	746	710	340
275/25R26	FORMULA-1		11	98	W	10J	276	798	750	340
LIGHT TRUCKS / VAN TIRE										
155R12C	B22	8PR	10	88/86	N	4.50B	157	550	590/530	450
185/70R13LT	STEADY-33	6PR	10	88/86	N	5.00B	170	582	560/530	350
185R14C	B22	8PR	12	102/100	Q	5.1/2J	186	650	860/800	450
185R14C	B23	8PR	12	102/100	Q	5.1/2J	186	650	850/800	450
195R14C	B22	8PR	12	108/104	N	5.1/2J	198	666	950/900	450
195/70R15C	STEADY-33	8PR	12	104/102	N	6J	201	655	900/850	450
LT215/75R15	AT2	8PR	12	106/103	Q	6J	216	703	950/875	450
LT235/75R15	AT1	8PR	14	104/101	Q	6.1/2J	236	733	900/825	450
6.50R16	B26	10PR	13	107/102	N	5.50F	185	750	975/860	500
7.00R16	B26	12PR	13	111/107	N	5.50F	220	775	1100/966	560
7.00R16	B26	12PR	13	115/110	N	5.50F	220	775	1220/1075	670
7.50R16	B26	12PR	13	120/116	N	6.00G	215	805	1405/1240	670
7.50R16	B26	14PR	13	122/118	N	6.00G	215	805	1495/1310	740

● — Refer to tires of concave bead design for giving good protection to high-grade wheels